



Installing your  
**Energy Saving  
Monitor**

E.ON Energy Limited. Registered Office, Westwood Way, Westwood Business Park, Coventry, CV4 8LG.  
Registered in England and Wales No: 3407430.

CERT\ESM\01\08 Current Cost Hardware version 1.7. Software version 34.07.

**e-on**

# Contents

	Page
Use your Energy Saving Monitor safely	3
Getting started	4
Tuning your sensor and display unit	5
Installing the transmitter and sensor jaw	6
Adjusting your electricity price	8
Tariff options	9
Understanding the Energy Saving Monitor	10
Setting the clock	12
Testing	13
In control of your energy	14
Troubleshooting	16
How to get in touch	17
E.ON shop	18



## Energy saving idea

Washing your clothes at 30°C saves a huge amount of energy. You'll find your clothes will be just as clean.



# Use your Energy Saving Monitor safely

It's important that you take some simple precautions before using your Energy Saving Monitor.

You won't need to carry out any electrical wiring to install the Energy Saving Monitor. However, care must be taken as it's used in and around the electricity supply to your property.

After reading the instructions on page 6, if you have any doubt about how to install it safely, do not attempt to install it yourself, but consult a qualified electrician.

Stop immediately and consult an electrician if you notice anything unusual about your electricity supply, for example:

- loose wires
- exposed copper wiring
- burn marks or holes in the cable insulation
- damage to your meter.

Do not attempt to repair or service any part of the Energy Saving Monitor. Go to [eonenergy.com/energymonitor](http://eonenergy.com/energymonitor) for help.

Do not immerse the equipment in water, or any other liquids.

Do not expose the equipment to heat, flame, steamy conditions or extreme cold.

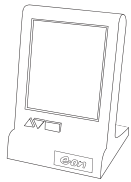
Do not open the equipment or touch any of its electronic circuitry.

Do not hit, strike or drop the equipment - if the display gets broken, take special care not to touch the liquid crystals.

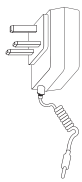
Do not use this equipment for any purpose other than for which it is intended.

# Getting started

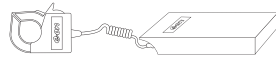
In the box you'll find:



Display unit



Display unit  
adapter plug



Sensor jaw and transmitter

## Plugging in the display unit

Connect the **display unit** plug into the round socket in the base of the display unit and wrap any excess wire around the drum under the base. Plug the power supply into a convenient socket.

The **Energy Now** value on the display will show dashes.

**Tip** Switching your display off will mean you'll need to re-programme your settings. It's safe to leave your display unit switched on. It won't overheat.

## Tuning your transmitter and display unit

Before installing the **sensor jaw** and **transmitter** you need to tune it into the same channel as the **display unit**. The successful settings will be saved, so unless you replace one of the units or add an optional second display, you only have to do this once. Whilst tuning keep your **display unit**, **sensor jaw** and **transmitter** in the same room to get a clear signal.

Inside the small hole on the front of the **transmitter** you'll find the tuning push switch. Using the tip of a ball point pen, push and hold in for nine seconds. When you release the switch the light on the **transmitter** will flash quickly to show that it is tuning a new channel. If it doesn't flash quickly, try pushing the switch again.

When it starts flashing quickly, move on to the next step.

**Tip** If the display unit still shows dashes instead of 0 watts a minute or so after tuning, then complete the process again.

Press and hold the **down** button on your **display unit** for a count of six (the transmitter light should still be flashing as you do this). When you release the button the **display unit** will show a tuning signal, and start to tune itself.

If you have an optional second **display unit**, also press and hold its **down** button at this time.

After tuning, your **display unit(s)** will clear and normal operation will begin.

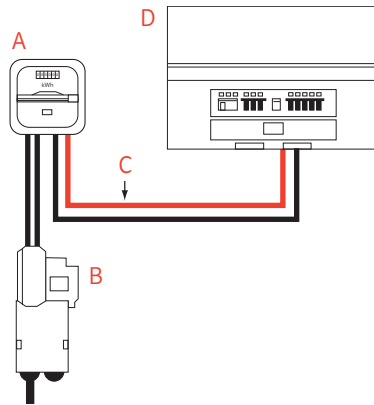
### Installing the sensor jaw and transmitter

There should be four cables entering the bottom of the electricity meter (A):

- Incoming live and neutral supply cables from the electricity suppliers main fuse (electrical cut out B).
- Outgoing live and neutral cables (meter tails C) which run to your fuse box (D).

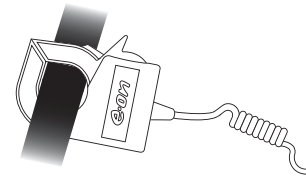
If you have an off-peak supply and have more than four cables or your cables are inaccessible, consult a qualified electrician for advice.

These instructions may not apply to every meter, you can find out more at [eonenergy.com/energymonitor](http://eonenergy.com/energymonitor)



- A Meter.
- B Main electrical supply cut out.
- C Live outgoing 'meter tail' to fuse box. (This should be the cable leaving the meter in the furthest right hand position).
- D Fuse box.

**Tip** If you have two electricity meters, start with your daytime meter, not the one which supplies your night storage heaters.



Clip the sensor jaw around the live outgoing meter tail (C) which goes to the fuse box (not the neutral).

Do not pull or bend the cables, just ease the cable into a position where you can fit the sensor jaw around the cable. If in doubt always consult a qualified electrician.

The black transmitter should be put in a dry location where it will not fall.

No electrical damage can occur to either the electrical installation or the transmitter by choosing the wrong wire.

### Important

Before connecting the sensor jaw you'll need to make sure the meter cables are in a good state of repair. Visually inspect the cables for signs of:

- deterioration
- exposed copper wiring
- excess heat or crackling noises and/or burnt and blackened cable covering.



### Energy saving idea

Don't leave televisions, DVD recorders or computers on standby.

# Nearly there...

**Tip** The blue LED will flash at the end of each stage of the programming to show that you have successfully completed that section.

## Adjusting your electricity price

The display unit has been pre-programmed with a default p/kWh unit rate.

You may wish to adjust this to match the rate you're paying.

You'll find your electricity rate on your energy bill.

Please follow the setup instructions below to adjust the cost settings.

- 1 Push the **up** button for three seconds and release.
- 2 Push **up** or **down** to change from euros/cents to pounds/pence.

- 3 Press the **square** button to confirm.
- 4 The price will then start flashing. Push the **up** and **down** button to adjust the pence price of the electricity.
- 5 Press the **square** button to confirm.
- 6 Repeat this process with the pence option.
- 7 Press the **square** button to confirm.
- 8 The blue LED on the front of the monitor will flash and the display will resume normal operation.

## Tariff options

There are several different tariffs available when buying electricity for your property. If you pay different rates for electricity used at different times of the day, the Energy Saving Monitor can be programmed to allow for this.

- 1 Press and hold the **up** and **down** buttons together for three seconds and release.
- 2 You will then see the clock flashing. Using the **up** and **down** buttons you can now set the time that your lower rate starts.
- 3 Press the **square** button to confirm.



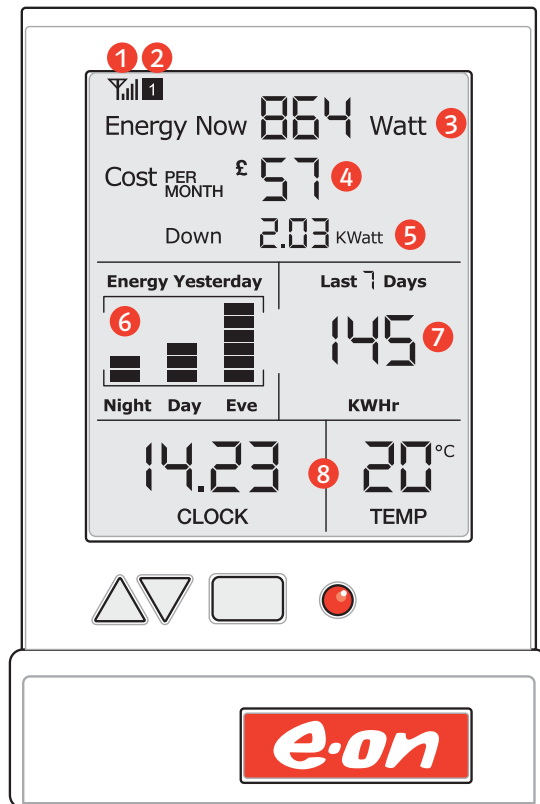
## Energy saving idea

Don't use higher wattage bulbs than you need. Think mood lighting, not Blackpool illuminations.

- 4 Using the **up** and **down** buttons you can now select your lower rate cost.
- 5 Press the **square** button to confirm.
- 6 Using the **up** and **down** buttons you can now set the time that your normal rate starts.
- 7 Press the **square** button to confirm.
- 8 Using the **up** and **down** buttons you can now select your normal rate cost.
9. Press the **square** button to confirm.
- 10 The blue LED on the front of the monitor will flash and the display will resume normal operation.

# Understanding your Energy Saving Monitor display

Once you've correctly set up and installed your Energy Saving Monitor. The screen on your display unit will look similar to this:



- 1 The aerial icon confirms that information is being read from the transmitter.
- 2 Indicates the number of sensor jaws installed.
- 3 Energy Now shows you how much energy you're using right now. Test it out by switching a light on and off and watch the figures as they change.
- 4 Cost per month shows how much money you're spending. It changes as you switch electrical items on and off. You can test it by switching on a light. The figures change automatically to show how much your electricity would cost you per day and per month if you didn't turn off your appliances.
- 5 Down shows you how much you save when you turn an appliance off or spend as you turn it on. It also shows you the equivalent level of energy use.
- 6 The graph shows you how much energy you've used between 7am to 3pm during the previous day, 3pm to 11pm the previous evening and 11pm to 7am the previous night.
- 7 This shows your cumulative energy in kWh and scrolls every ten seconds between the last day, the last seven days and the last 30 days. You can also scroll through these using the square button.
- 8 The monitor always displays the time and the temperature.



**Tip** If you get lost at any point during the set up, or accidentally hit any button on the display unit, do not press anything for 10 seconds and the display will resume normal operation.

Now that your display unit and transmitter are tuned in, all you need to do is set the time and you are ready to start using your Energy Saving Monitor.

#### Setting the clock

- 1 Press and hold the **square** button for three seconds. The screen will clear and the hours will flash.
- 2 Use the **up** and **down** buttons to set the correct hours. The monitor has a 24 hr clock.
- 3 Push the **square** button once and the minutes will flash. Use the **up** and **down** buttons to set the correct minutes.
- 4 Push the **square** button once. The blue LED on the front of the monitor will flash and the display will resume normal operation.

Congratulations, you've now successfully installed and set up your Energy Saving Monitor.

#### Testing

Why don't you now test your monitor by switching off a light?

If you switch off an appliance, your monitor will now show you the amount you saved per hour, per day and per month.

In the unlikely event that your display unit doesn't show any change when you test it, you may need to tune it to a different channel. First carefully remove the sensor jaw from your meter and repeat the process of tuning, installing and setting up the monitor as shown on pages 5 to 9.



#### Energy saving idea

Don't leave your phone on charge all the time - remember to unplug it once it's been charged.



## Now you can take control of the energy you use

Your Energy Saving Monitor will help you save money by changing the way you use energy. It shows you how much electricity you're using right now and how much it's going to cost you every day and every month. It can't save you money on its own but it can help raise awareness and highlight areas where you can improve your energy efficiency.

### **Check the display regularly**

If it shows that your energy use is high, it could mean there's something you can switch off now, like a light bulb or an appliance left on stand-by.

### **Check the display before you leave the house**

Have you forgotten to switch something off? The monitor will show you exactly how much electricity you'll be using, even when you're not at home.

### **Check the display before you go to bed**

How much money will you spend while you're asleep? And what can you save by switching off an appliance?

### **Monitor how much money it costs you to boil the kettle, or cook a meal.**

Can you save by filling the kettle with only what you need, or by turning down the rings on your hob?

### **Test whether you can save money and electricity by switching off appliances.**

You'll be surprised how much energy is wasted in a typical day, especially when appliances are left on standby.



## Troubleshooting

Your Energy Saving Monitor should reach you in perfect condition. If you have connected it properly but can't get it to work, please check the following.

Try these helpful hints		
Problem	Possible cause	Solution
No display	Faulty display and/or display unit power supply	Unplug the equipment and start again
Corrupted display (incomplete data)	Faulty display	Unplug the equipment and start again
Alternating readings	Display unit picking up a signal from a neighbour's transmitter	Follow the instructions on page 13
Data does not change	Incorrect installation	Unplug the equipment and start again
Costs reading seems excessively high or low	Correct tariff has not been set	Refer to the tariff options on page 9
Temperature gauge excessively high	Located too close to heat source	Move monitor to a different location

**Important:** If you can't fix the problem on your own do not attempt to repair the equipment. Disconnect it and give us a call.

## Getting in touch

For help and advice on your Energy Saving Monitor installation go to

→ [eonenergy.com/energymonitor](https://eonenergy.com/energymonitor)

For energy efficiency advice go to

→ [eonenergy.com/energyadvice](https://eonenergy.com/energyadvice)

or call our Energy Efficiency Advice Team on **0845 301 4857**. We're open weekdays 8am to 8pm and Saturday 8am to 6pm.

Calls may be recorded. The maximum call charge from a BT landline is 2p per minute. Calls from other networks may vary.



### Energy saving idea

Save energy by only boiling the water you need. An Energy Saving Kettle makes it easy.

# Shopping

There are many products you can buy to help you to save energy and money. Our range of energy efficiency products are available for you to buy online and include:

### Energy saving bulbs and lamps

Save money with our range of energy efficient light bulbs and fun lamps.

### Energy Saving Kettle

Stylish electric kettle which only boils the water you need.

### PowerDown

Save money and hassle by automatically switching off any equipment linked to your desktop computer.

### Energy saving packs

We've bundled some of our energy saving products together to give you even greater savings.



[eonshop.co.uk](http://eonshop.co.uk)



# A big thank you...

for taking the decision to reduce the energy you use, your electricity bill and the impact you have on the environment.

Making a difference starts with each and every one of us doing something positive to reduce the energy we use.

That's where your Energy Saving Monitor will help. It won't cut your electricity bills on its own but it can show you how much energy and money you're wasting and help to change your habits, raise awareness and highlight everyday ways to be more energy efficient.



### Did you know?

There's lots more free energy efficiency advice online at [eonenergy.com/energyadvice](http://eonenergy.com/energyadvice)